



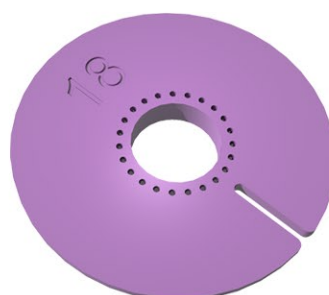
The Peyote Bezel Starter is a practical tool to create a setting for a rivoli or cabochon with Miyuki Delicas. It can start a Peyote Bezel from 12 mm up to 25 mm.

Before it can be used as a Peyote Starter, you have to bead 4 rows of Peyote. These rows will be connected to the rigid plastic tool. This way it is much easier to handle.

Use one color Miyuki Delica 11/0.

We recommend to not use black or too dark, this is less visible and harder to work with. We also recommend to not use fragile coatings.

The number of beads needed depends on the size of your rivoli/cabochon. Page 10 contains an overview.

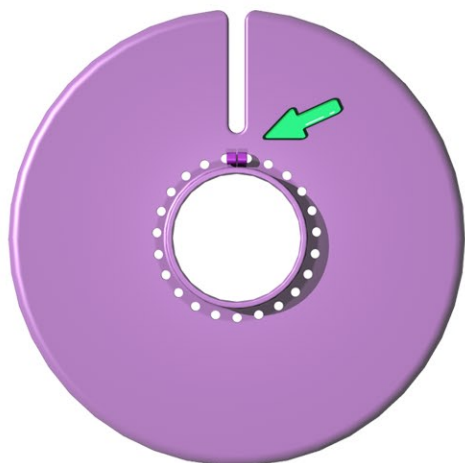
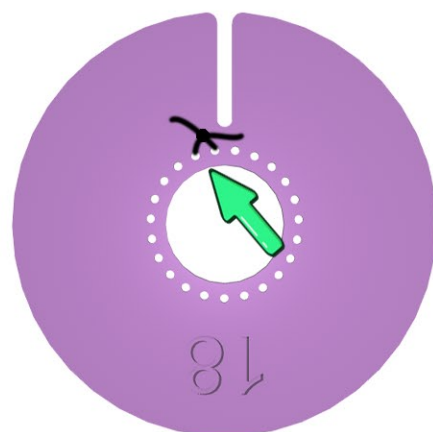


Bottom with size indication

Follow this tutorial to make your own Peyote Bezel Starter.

1. Start with making a knot using 2 holes on the backside of the Bezel Starter. Use the 2 holes to the left of the open notch.

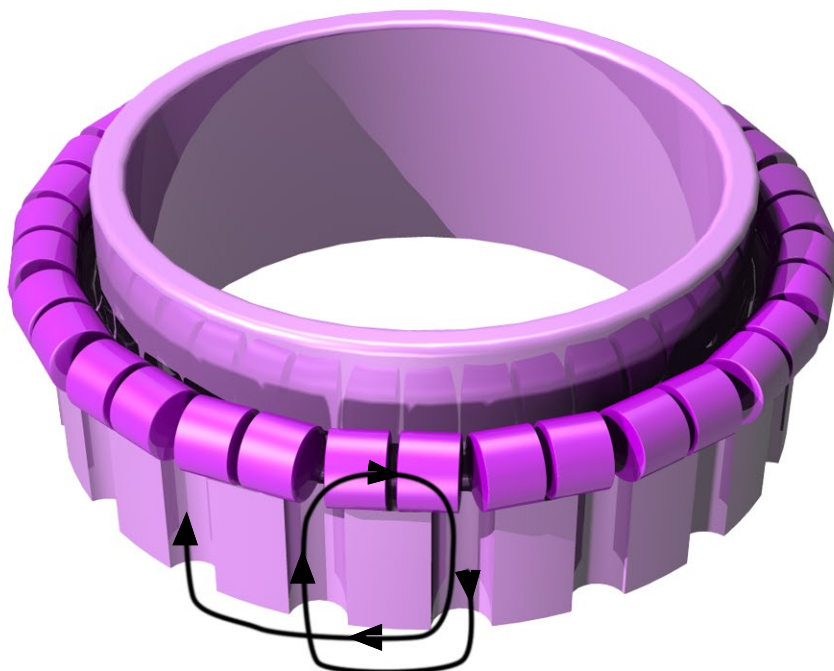
The thread is now secured to the tool.



2. Go back up, pick up 2 beads and go down through the next hole.

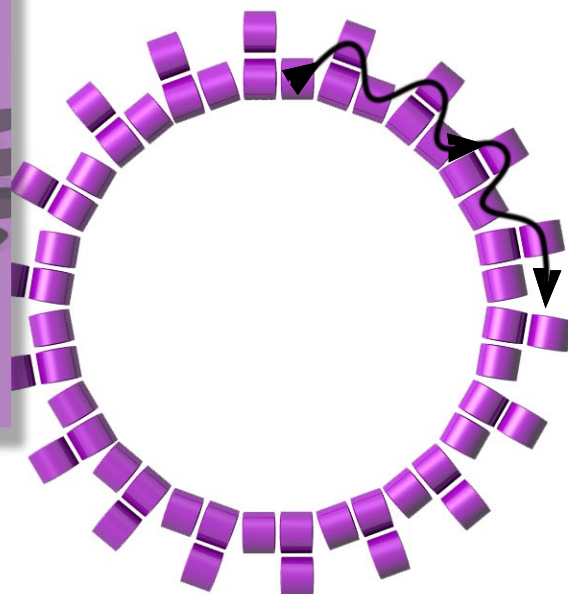
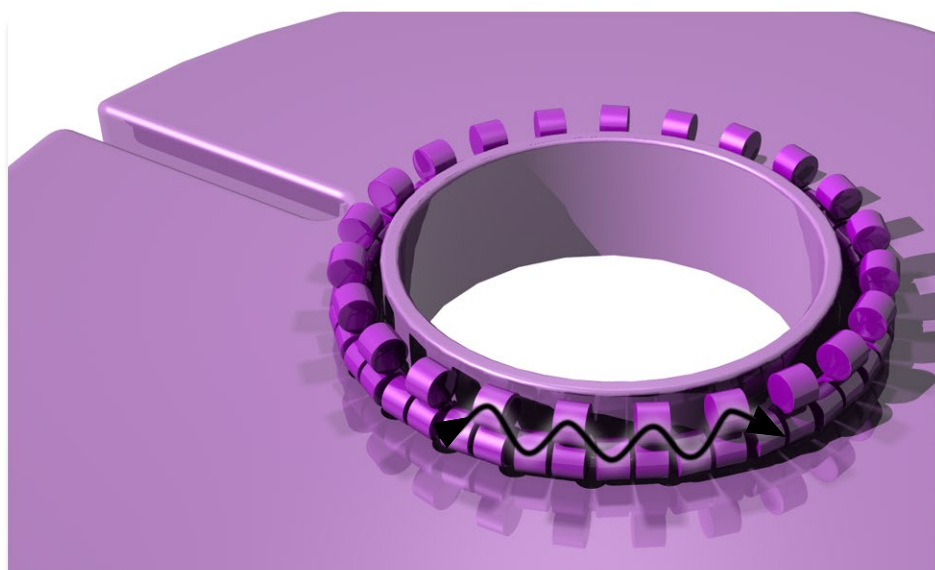


You are going to make a circle of beads by picking up 2 beads every time you are on the top side of the Bezel Starter.



3. In this picture we made a cross section through the holes to show the threadpath. After going down, go up through the next hole, pick up two beads, go down, skip a hole and go up again to pick up 2 new beads. Repeat this all the way around. Make sure you go through the first 2 beads strung a second time before you start the next row.

4. Add a new row by doing Peyote Stitch: pick up 1 bead, skip 1 bead in the circle and go through the next bead in the circle. Repeat all the way around and step up.



Peyote Bezel Starter



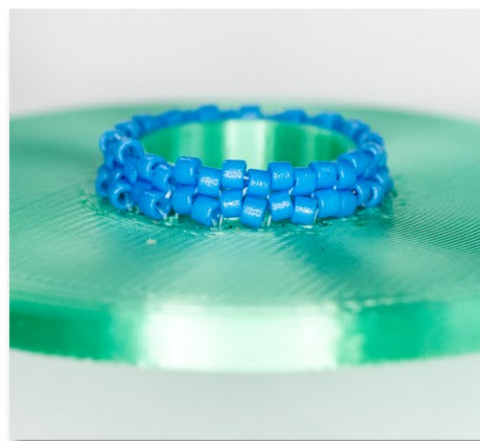
5. Fold this row upwards so it follows the rim around the hole.



6. Add the last row doing Peyote Stitch. Use enough tension to close the beads around the rim.

This last row will just stick out above the rim, so you can start the bevel.

The Peyote Bezel Starter is now ready to use.

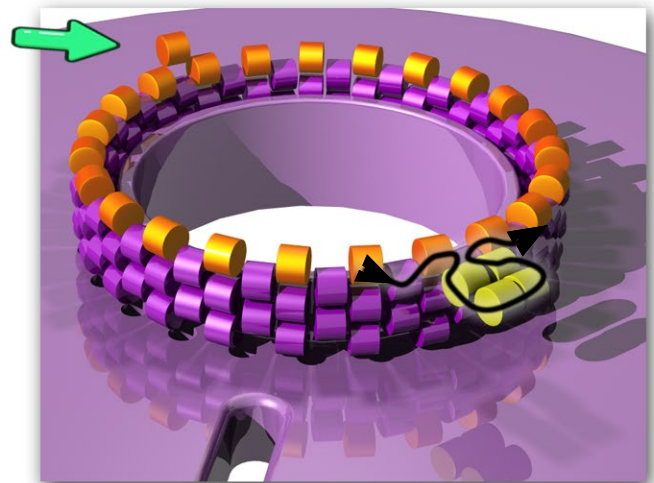




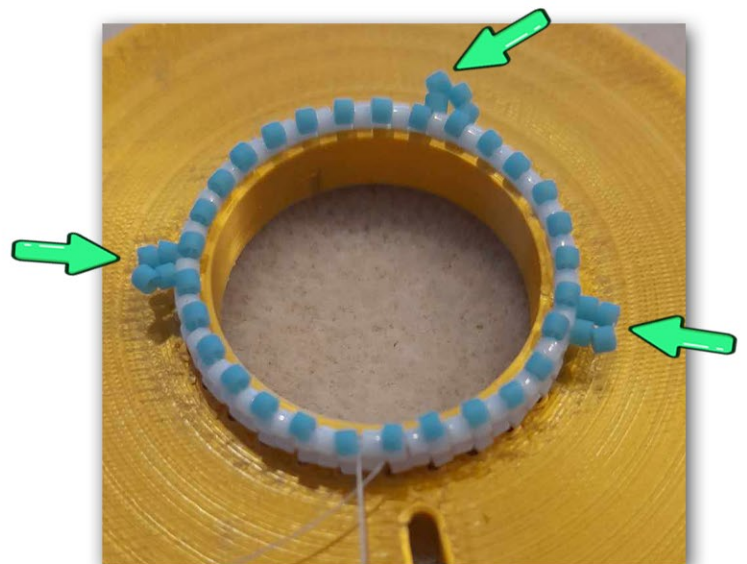
Making a Bezel with the Peyote Bezel Starter

7. Take a 'help thread' (you will not use this thread in the final piece, it's a separate temporary thread), attach a stop bead and leave a tail of about 8 cm/3 inches. Pull the tail to the other side of the Bezel Starter using the open notch, so that it does not get in the way.

Peyote through the Peyote Bezel Starter until you are halfway. To ensure a smooth release of the 'help thread', add 4 'help beads' (this will give space to cut the help thread halfway): pick up 1 Delica and 4 help beads and pass through the next bead in the circle of the Bezel Starter.

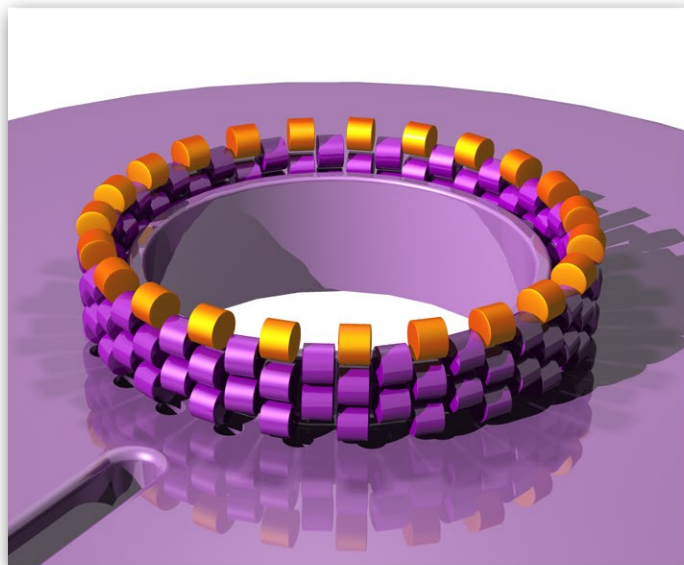


To make the release of the bezel even easier (especially with the larger bezels), you can add a set of 4 help beads several times to the first row.



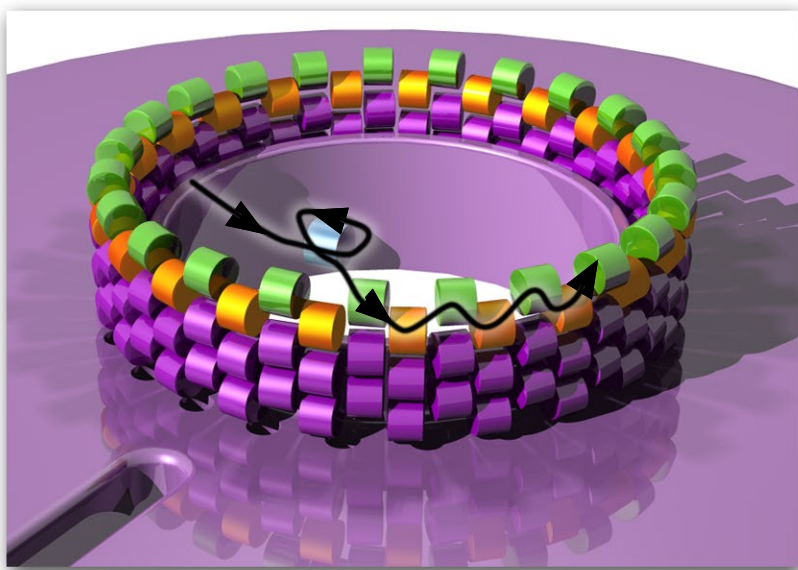


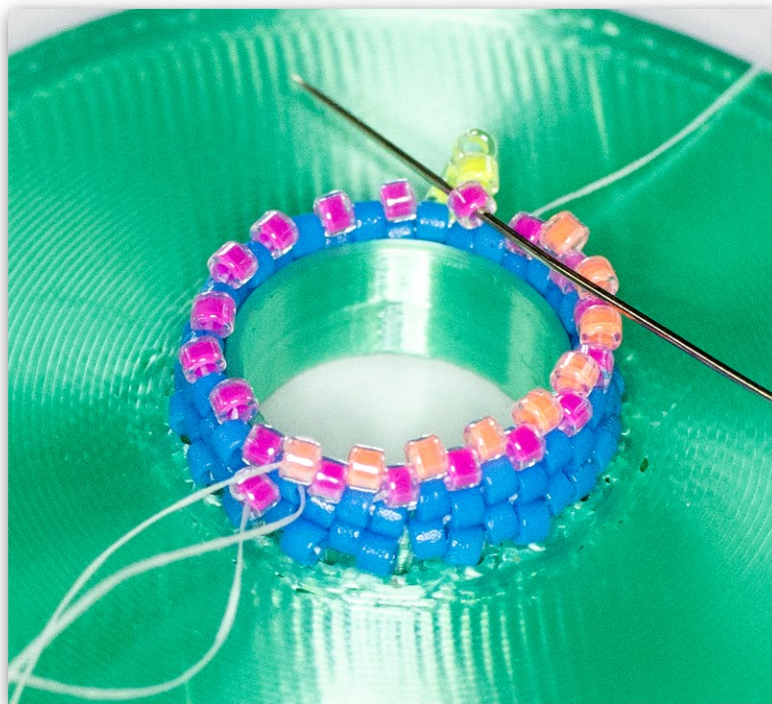
8. Finish the row doing Peyote Stitch and step up.



9. For the second row: take a new thread (this is the 'real thread' that you will be continuing with) with a stop bead and leave a tail to finish the thread later.

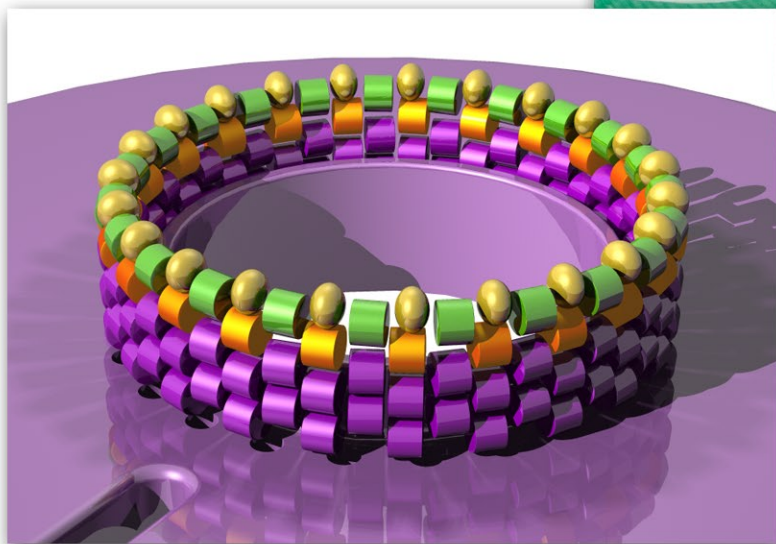
Peyote the second row and step up.

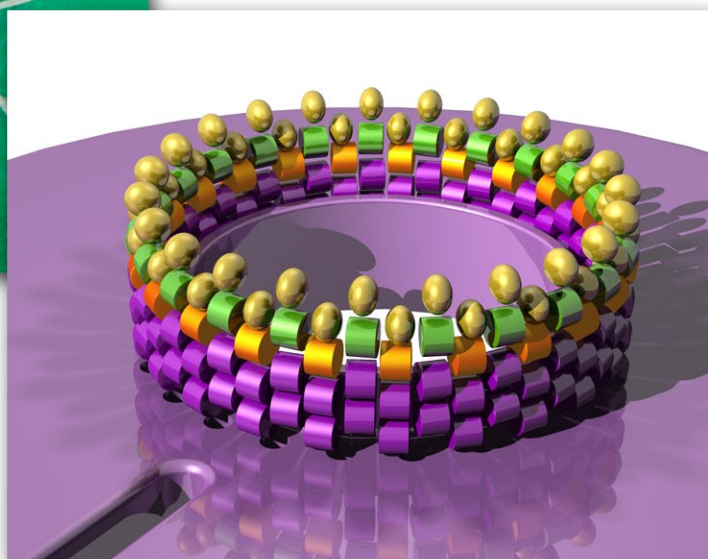




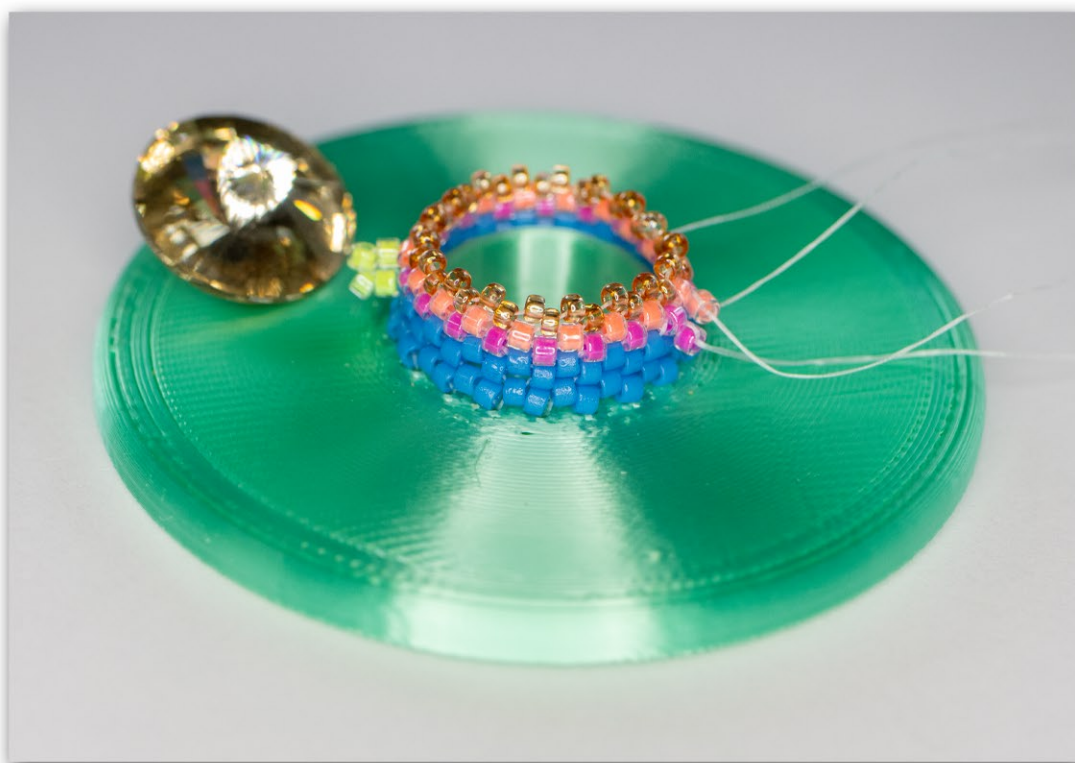
10. Peyote 2 rows with 15/0 Round Beads.
Step up after each row.

These beads are smaller,
so the circle will get smaller,
creating the bezel.



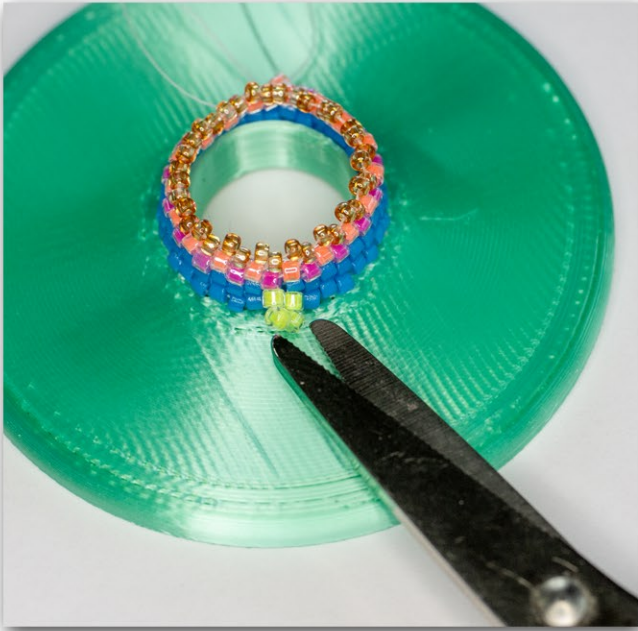


The bezel is now ready to be released from the Peyote Bezel Starter.





11. Use a scissor to cut the help thread between the 4 help beads.



12. Carefully pull one piece of the help thread to release the bezel. If needed, use a plier to get a good grip on the thread.

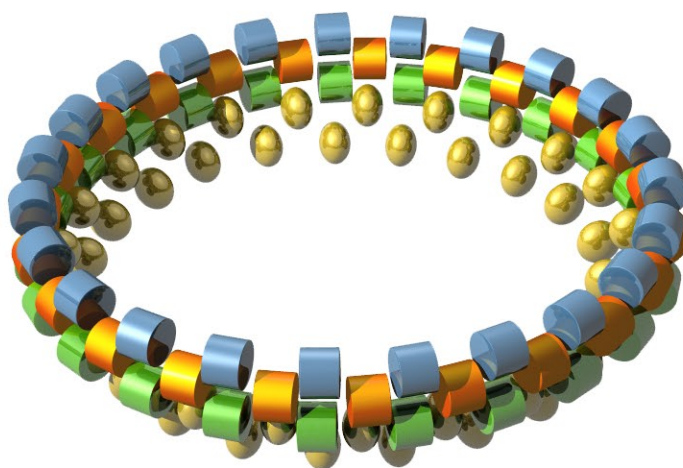




13. Once one part of the thread is pulled, pull out the other part to release the bezel from the Peyote Bezel Starter.



14. Move the thread to the other side and peyote 1 row with Delicas.

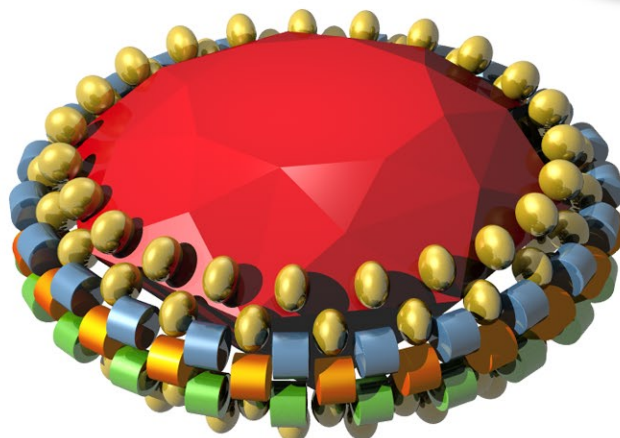
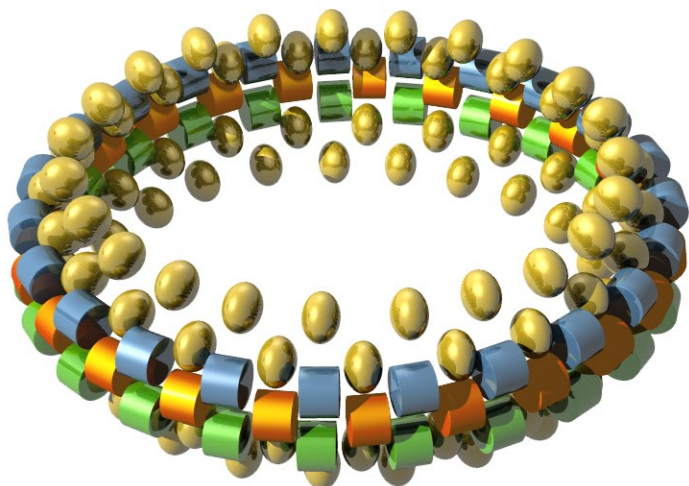


15. Place the rivoli in the bezel and secure it with 2 rows of 15/0 Round Beads.

This is the basic method to bezel a rivoli, but you can vary the number of rows used.

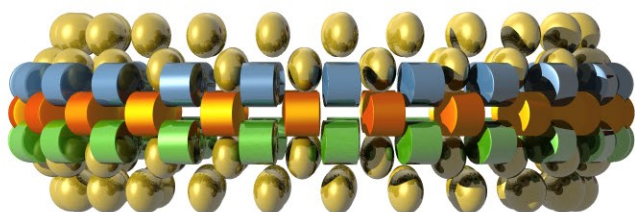


Peyote Bezel Starter



Your bezel should now have
from top to bottom:

2 rows 15/0, 3 rows Delica, 2 rows of 15/0



Supplies to make Peyote Bezel Starter

Size Rivoli/Cabochon	Number of Delica beads in first row	Total Number Delica beads used
25 mm	64 DB	128 DB
24 mm	58 DB	116 DB
20 mm	54 DB	108 DB
18 mm	46 DB	92 DB
16 mm	42 DB	84 DB
14 mm	36 DB	72 DB
12 mm	32 DB	64 DB